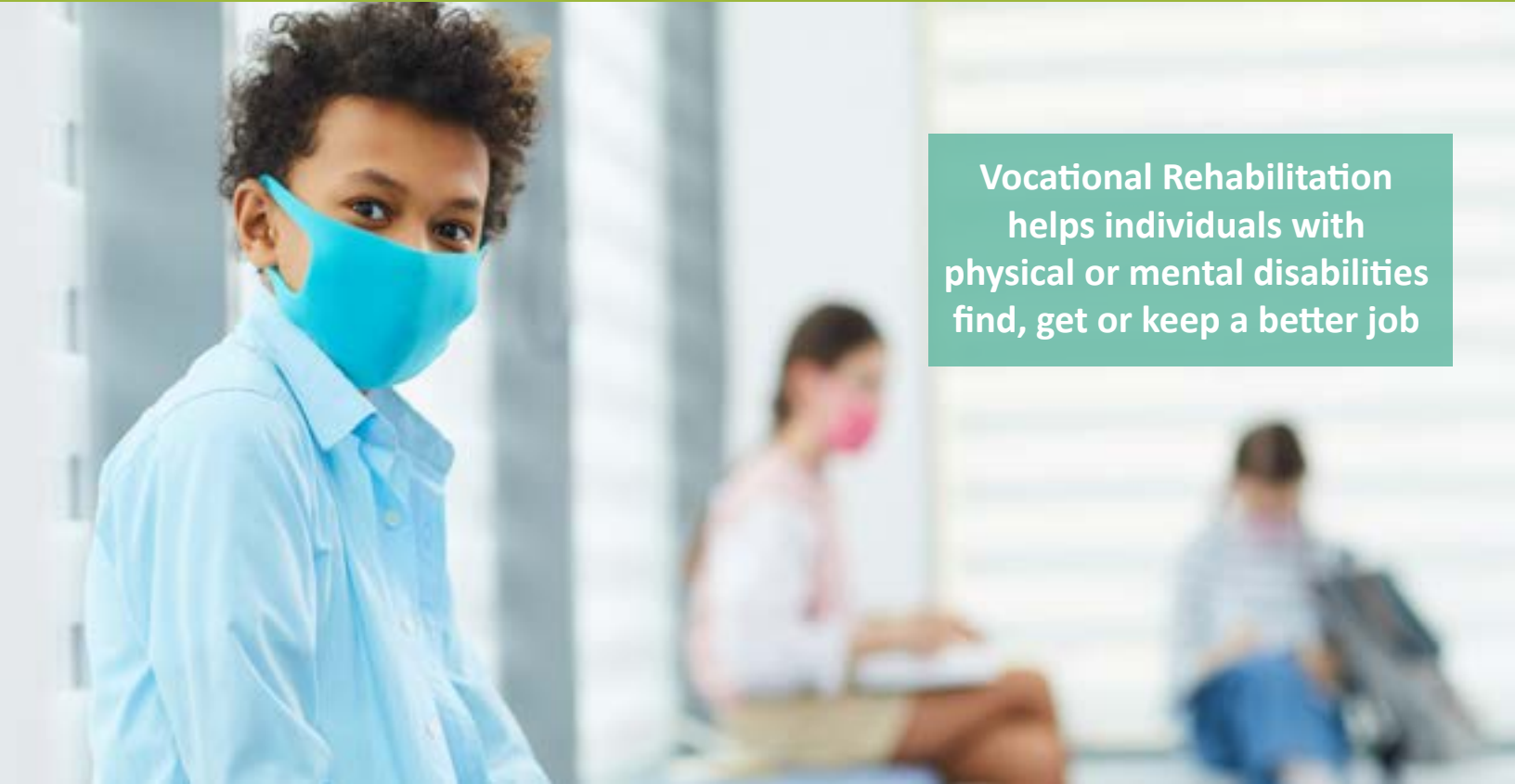


# Pre-Employment Transition Services



Vocational Rehabilitation helps individuals with physical or mental disabilities find, get or keep a better job

**The Florida Department of Education, Division of Vocational Rehabilitation (VR) works together with students, families, schools and community agencies and organizations to provide services that promote successful transitions from school to work and into adult life.**

## **What is Pre-Employment Transition Services?**

Pre-Employment Transition Services (Pre-ETS) offer students with disabilities an early start at career exploration and preparation for adult life.

Beginning at age 14, students with disabilities can connect with VR for Pre-ETS. VR works with students, their families, their schools and community partners to enrich transition planning and support students with gaining knowledge and experiences necessary so they may make informed decisions about their future.

Under the Workforce Innovation and Opportunities Act (WIOA), every student (ages 14-21) with a disability has the opportunity to participate in Pre-Employment Transition Services (Pre-ETS). This includes:

- Job-exploration counseling
- Work readiness training
- Work-based learning experience
- Postsecondary educational counseling, and
- Self-advocacy training and peer mentoring

Students with disabilities may participate in Pre-ETS without having to apply to VR or be determined eligible for services. The focus is to develop work skills, practice social skills and acquire a network of community supports while the student is still in high school.

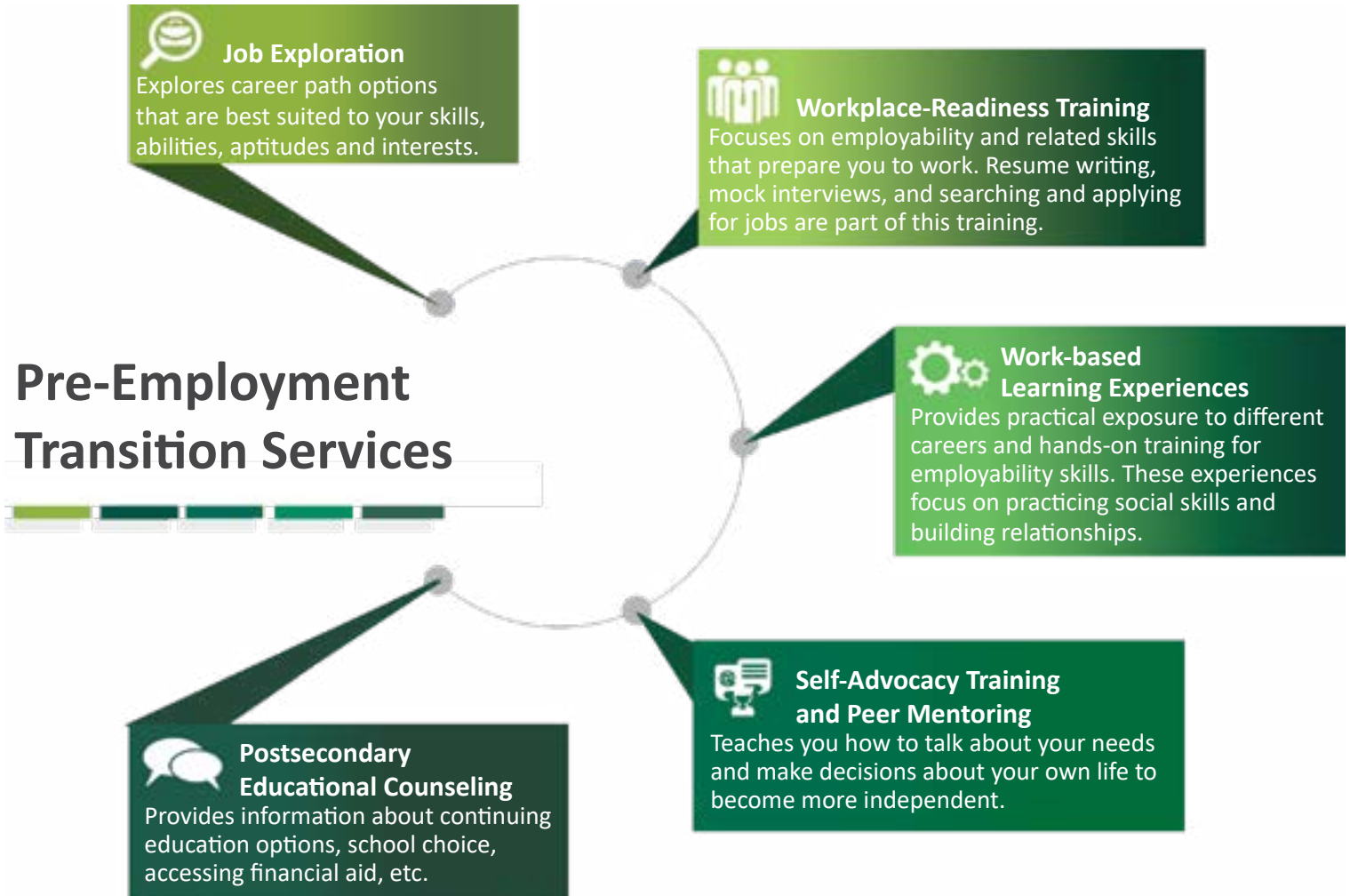


## Who Can Participate in Pre-Employment Transition Services?

Students with disabilities ages 14-21 who are currently enrolled in school.

## What are the Pre-Employment Transition Services?

Pre-ETS include job exploration, workplace-readiness training, work-based learning experiences, training on self-advocacy (e.g., youth peer mentoring) and postsecondary educational counseling.



## How Does a Student Access Pre-Employment Transition Services?

Students can contact a VR office or request a referral from their school.

## Contact Vocational Rehabilitation



850-245-3399  
800-451-4327



VRTransitionYouth@  
vr.fldoe.org



[www.RehabWorks.org](http://www.RehabWorks.org)



Division of Vocational Rehabilitation  
Transition Youth Services  
325 West Gaines Street, 11th Floor  
Tallahassee, FL 32399-0400

The Florida Department of Education, Division of Vocational Rehabilitation (VR) is an equal opportunity employer. It is against the law for VR as a recipient of Federal financial assistance to discriminate against any individual in the United States on the basis of race, color, religion, sex, national origin, age, disability, political affiliation or belief. The application process used by VR to determine eligibility for services, any subsequent services and the entire VR process are subject to these non-discrimination requirements. Auxiliary aids and services are available upon request to individuals with disabilities. VR program receives 78.7 percent of its funding through a grant from the U.S. Department of Education. For the 2020 Federal fiscal year, the total amount of grant funds awarded were \$153,000,001. The remaining 21.3 percent of the costs (\$41,409,148) were funded by Florida State Appropriations. Revised October 2020.